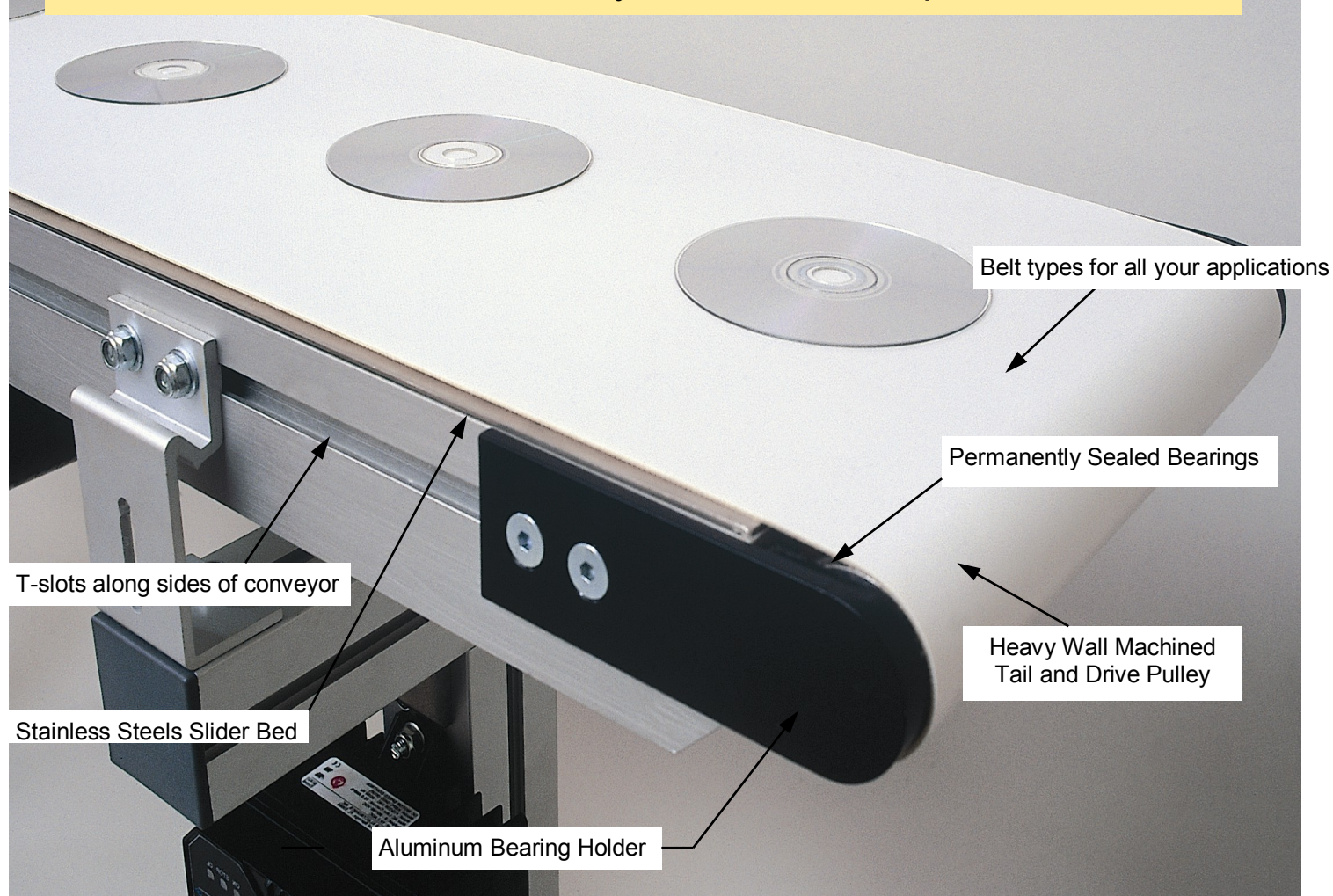


LOW PROFILE CONVEYORS

McKenzie Handling Systems has been designing and manufacturing standard and custom belt conveyors since its incorporation in 1985.



McKenzie's Low Profile Modular Belt Conveyor provides the design flexibility needed to meet your requirements.

- 2 7/8" Aluminum Extrusion Frame
- Center or End Drive
- Constant or Variable Speed
- Top or Side Mount Motor
- Custom Design
- Lengths from 1' to 100'
- 2" to 60" Conveyor Widths
- Selection of Belt Types
- Adjustable Supports
- Capacities up to 1,000 lbs.

McKenzie

Low Profile Conveyors

Table of Contents

Introduction2

Table of Contents3

Conveyor Features4

End Drive Conveyor5

Center Drive Conveyor6

Belts7

Motors8

Controls9

Supports10

Guide Rail11

Inclines and Cleated Belts12

Twin Belts13

Accessories14

Custom Conveyors14



End Drive



Center Drive



Clean Room

BELT CONVEYORS

Quick Ship in 7 Days

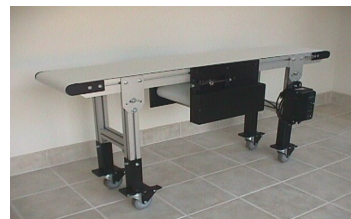
- 2 7/8" Aluminum Extrusion Frame
- Center or End Drive
- Constant or Variable Speed
- Lengths from 1' to 100'
- 2" to 60" Conveyor Widths
- Wide Variety of Belt Types
- Application Support
- Custom Designs
- Capacities up to 1,000 lbs.

Made in the USA



Belt styles for all your applications!

- Accumulation
- Anti-Static
- Clean Room
- Cleated
- FDA
- High Temp
- Indexing
- Mattop
- Plastic Chain
- Twin Belt
- Wire Mesh



**3127 Dublin Lane
Bessemer, Alabama 35022
205-424-4151
205-424-4514 fax
1-800-476-0256**

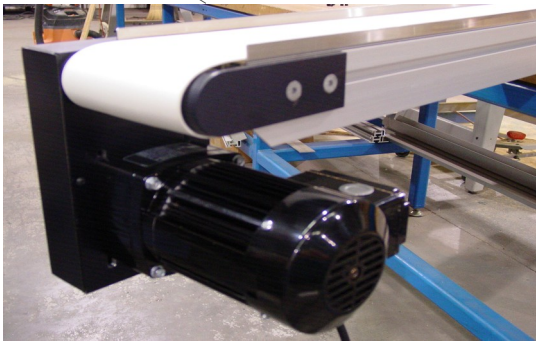
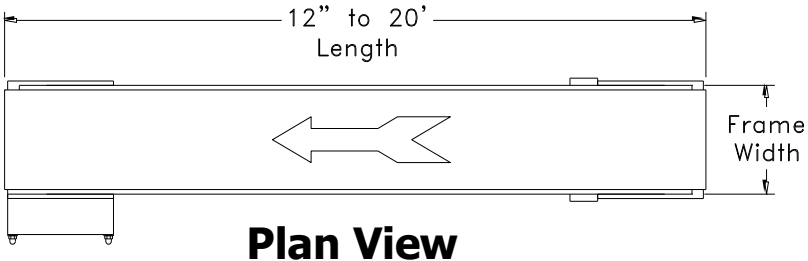
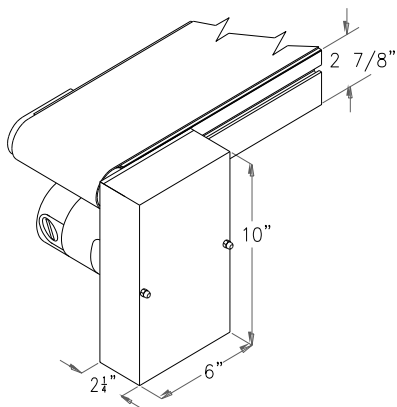
Ask about our Quick Ship Program



McKenzie
Handling Systems, Inc.

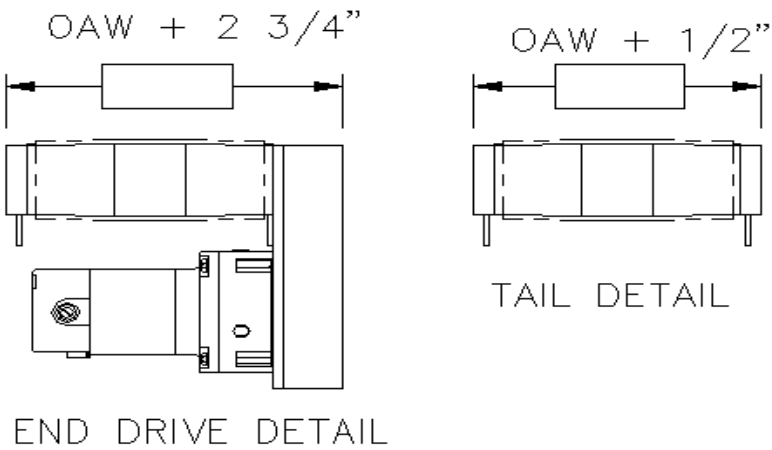
End Drive

The McKenzie Low Profile Belt Conveyor can have a center or end drive, with optional side and top mount.



Standard Sizes

Frame Width	Belt Width
2 1/8"	1 5/8"
4 1/2"	4"
6 1/2"	6"
8 1/2"	8"
10 1/2"	10"
12 1/2"	12"
14 1/2"	14"
16 1/2"	16"
18 1/2"	18"
20 1/2"	20"
22 1/2"	22"
24 1/2"	24"

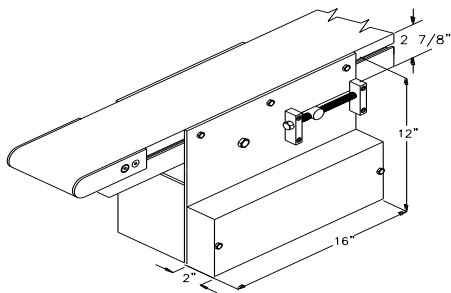


Center Drive

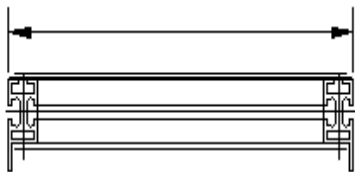


Standard Sizes

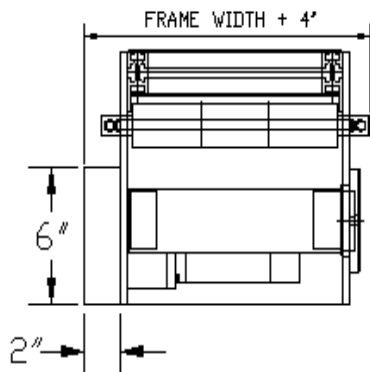
Frame Width	Belt Width
2 1/8"	1 5/8"
3 1/2"	3"
4 1/2 "	4"
6 1/2 "	6"
8 1/2"	8"
10 1/2"	10"
12 1/2"	12"
14 1/2"	14"
16 1/2"	16"
18 1/2"	18"
20 1/2"	20"
22 1/2"	22"
24 1/2"	24"



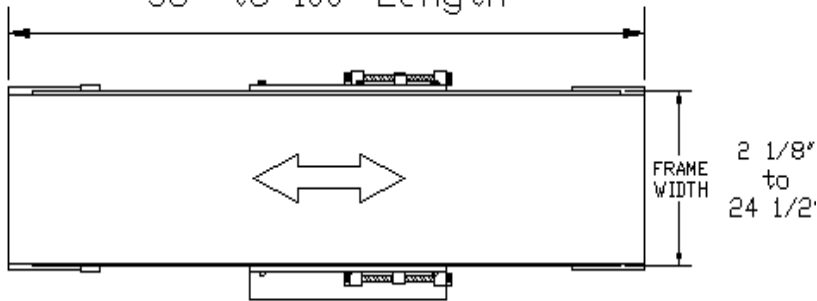
BELT WIDTH =
FRAME WIDTH - 1/2"



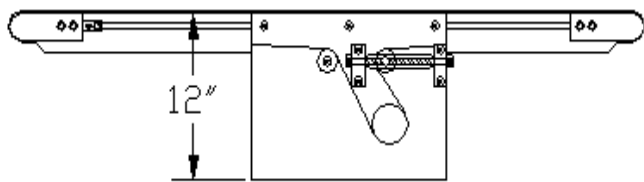
Frame



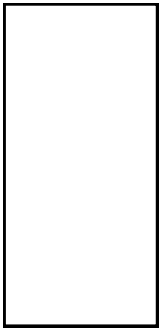
36" to 100' Length



Plan View



Side View



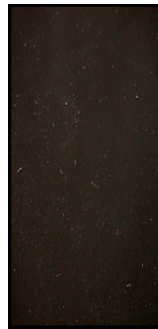
B1
 .067" Thick - White or Green
 2-ply polyurethane
 smooth with matte cover
 for transportation and accumulation
 FDA/USDA approved for food,
 chemical, and pharmaceutical industries
 easy to clean, finger splice
 -4° F to +176° F



B2
 .060" Thick - White or Black
 2-ply polyester fabric
 smooth with base fabric on both sides
 for transportation and accumulation
 FDA/USDA approved for food,
 chemical, and pharmaceutical industries
 easy to clean, finger splice, smooth surface
 +14° F to +158° F



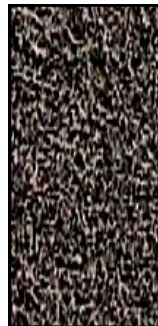
B3
 .083" Thick - Green or Blue
 high grade PVC
 for general conveying
 traction material for high friction
 excellent abrasion and oil resistance
 anti-static, finger splice
 +14° F to +158° F



B4
 .075" Thick - Black
 PVC - Top Cover with Matt Finish
 Rigid fill
 Polyester - Bottom Cover Fabric
 for transportation and accumulation
 Anti Static, finger splice
 -5° F to +195° F



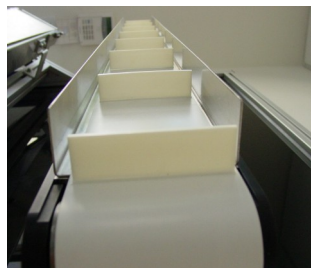
B5
 .125" Thick - Green
 2-ply PVC
 with longitudinal grooves
 for inclines to 45°
 anti-static, finger splice
 +14° F to +158° F



B6
 .100" Thick - Black
 non-woven felt
 woven polyester center
 for accumulation and transportation
 of easily marked products
 anti-static, thermal splice
 non-marking, cut and wear-resistant
 -4° F to +250° F

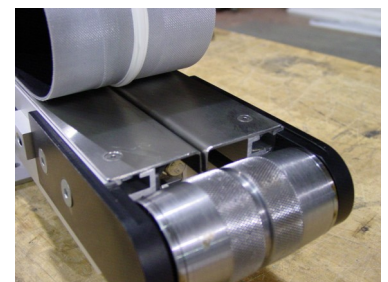
Special Belts available:

Cleated Belts 1/2" to 2" high
 V Belt Guides
 High Temperature Belts to 350° F
 Knife Edge Belts for 1/2" diameter rollers
 Transparent Belts
 Static Conductive Belts
 Rough Top Belts
 Wire Belts



Urethane Cleats

Color: White or Green
 Cleat Centers Min. 3"



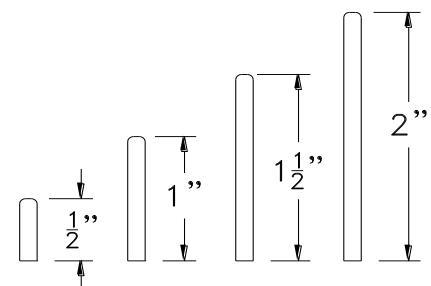
V BELT

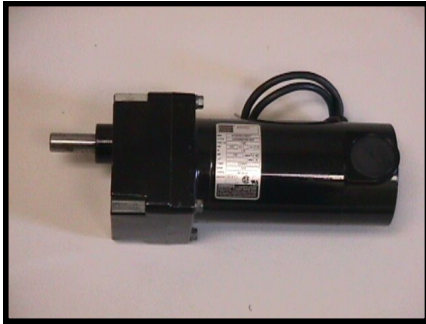
Splices available:

Endless
 Clipper Lacing
 Non-Metal Lacing



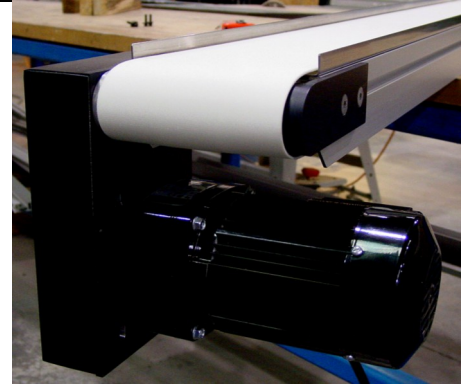
Wire Belt





115/230 volt AC Parallel Shaft

- single phase
- constant speed
- light load applications



130 volt DC Parallel Shaft

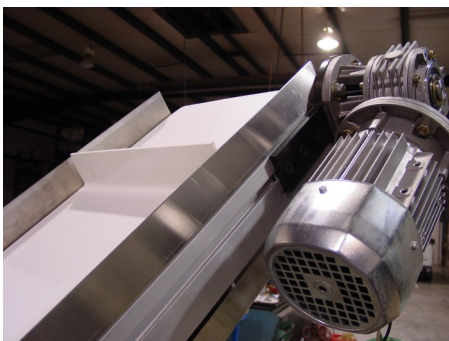
- variable speed
- light to medium loads



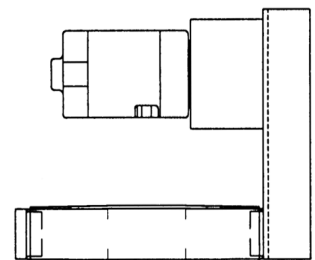
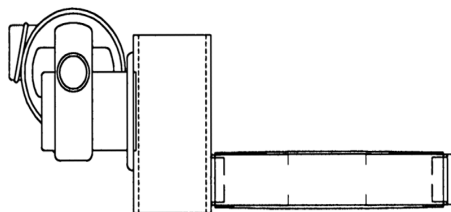
Gearmotor Right Angle

- 120/230/460 volt
- three phase, 60 Hz
- 90 volt DC
- heavy loads
- multiple shifts

The McKenzie Modular Belt Conveyor offers parallel shaft and right angle gearmotors, both AC and DC, and choice of controllers.



Side Mounted End Drive



CONTROLS



DC Controller

KBPC 240D
Deluxe Unit
90 Volt DC
Indexing
Brake Module
Reversing
PLC-controlled
NEMA 4



DC Controller

KB 240D
Basic Unit
90 Volt DC
Start
Stop
Forward
Reverse
NEMA 1



AC Controller

Compact
Frequency Inverter with
Basic Functions
Input Voltages
115/230, Three Phase
60 Hz
NEMA 4



DC Controller

Bodine
Basic Unit
130 Volt DC
Start
Stop
Forward
Reverse
NEMA 12



**Manual Motor
Starter**



**Start/Stop
Pushbutton
Station**



**Emergency
Stop
Pushbutton**

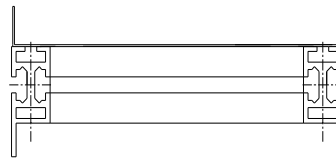
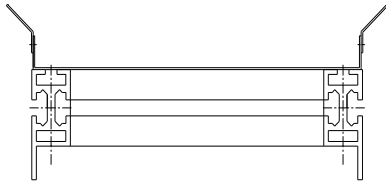
Also Available

- Custom Controls
- PLC
- Indexing
- E-Stop Pullcords

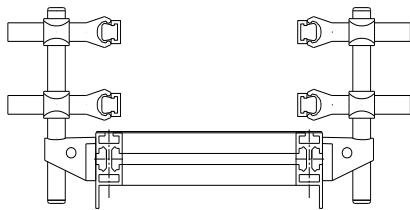
The McKenzie Modular
Belt Conveyor offers a
choice of controllers.

Guide Rails

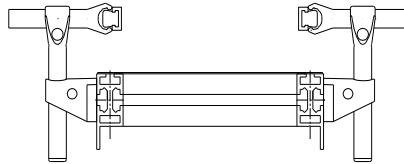
The McKenzie Modular Belt Conveyor offers several types of guide rails and optional flared hopper.



Fixed Guide Rail
1/2" thru 6" High



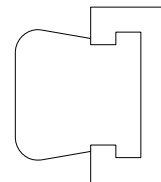
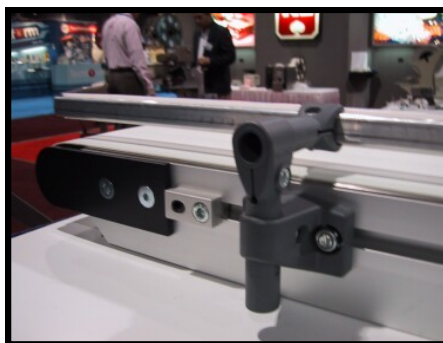
**Adjustable Guide Rail
Double High**
(adjusts Horizontally
and Vertically)



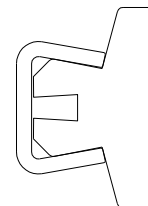
**Adjustable Guide Rail
Single High**
(adjusts Horizontally
and Vertically)



Tall Back Guarding



Solid
Aluminum
Guide Rail
with Plastic
Cover



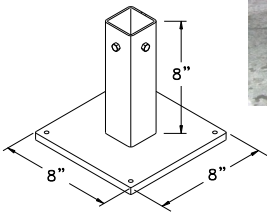
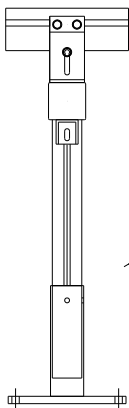
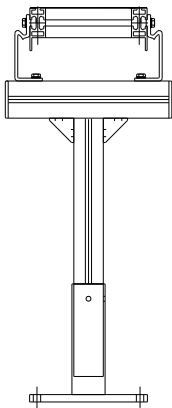
UHMW
Tee Profile with
Stainless Steel
Sheath

Supports

The McKenzie Modular Belt Conveyor offers three types of supports: "T", "H", and caster.

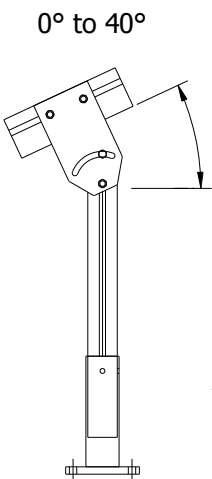
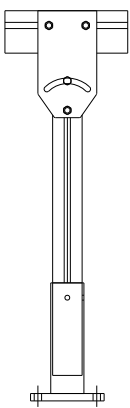
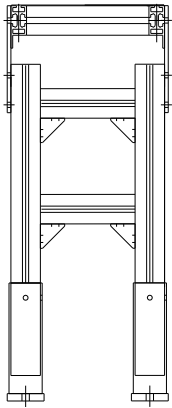
T-Support

Adjustment
-1" +3"

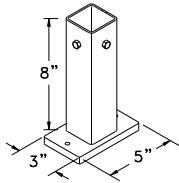


H-Support

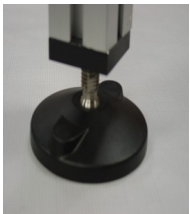
Adjustment
-2" +3"



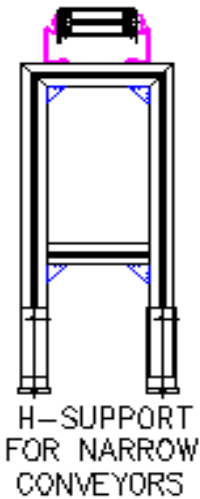
0° to 40°



H-support shown level (center), and angled (right).



Adjustment
-2" +3"



Swivel and
Caster Lock

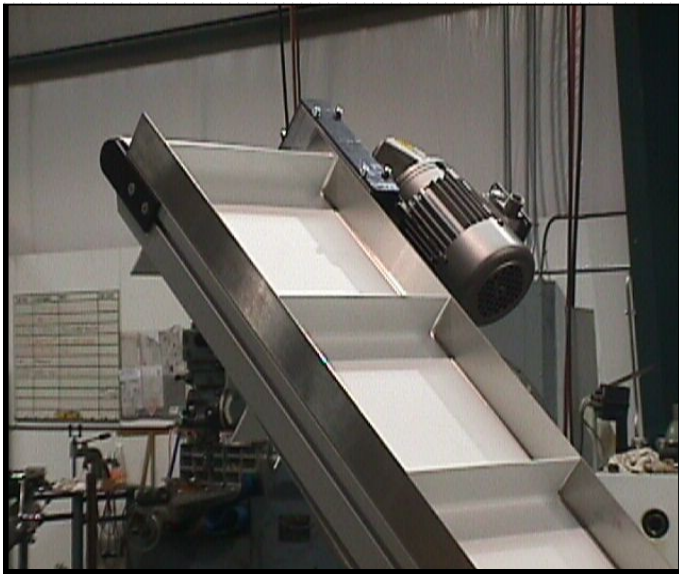
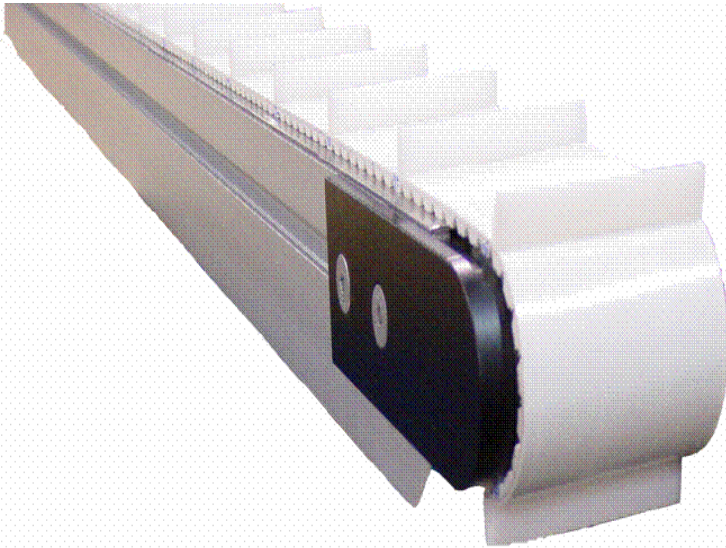
Caster Supports



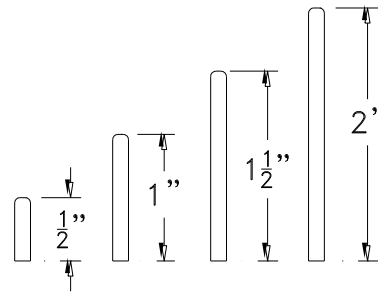
Heavy Duty Caster
Adjustment None

Inclines and Cleated

The McKenzie Modular Belt Conveyor offers an incline conveyor and optional feeder conveyor.



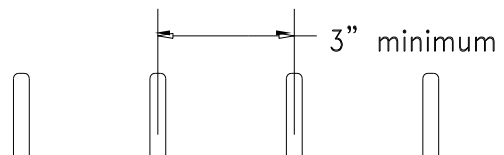
Incline Conveyor



Cleat Height



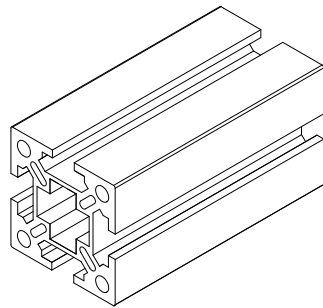
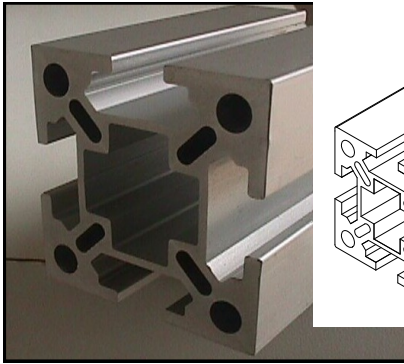
Optional Hopper



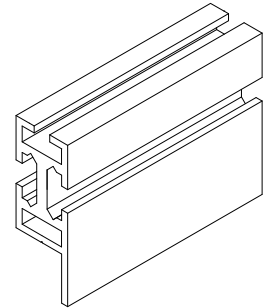
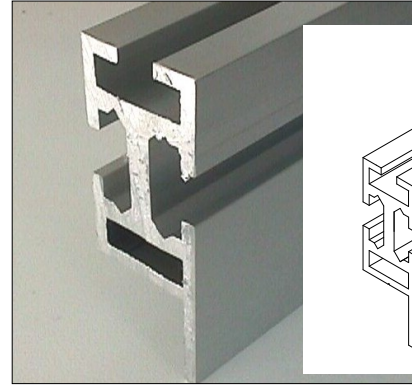
Cleat Centers

Accessories

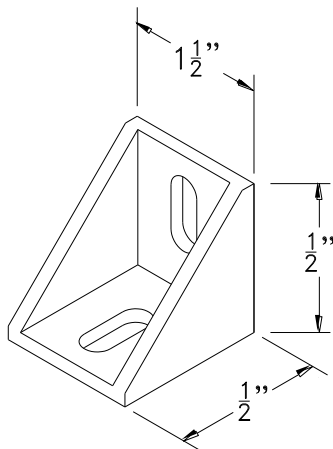
The McKenzie Modular Belt Conveyor uses two types of extrusion.



Part #21029
2" X 2" Extrusion



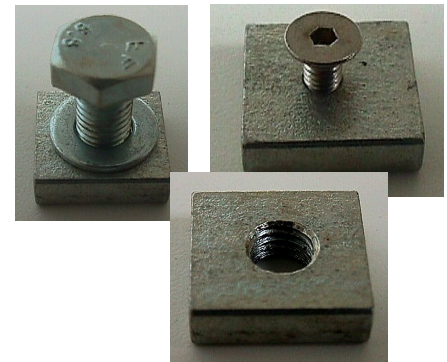
Part #21001
1 1/16" X 2 7/8" Extrusion



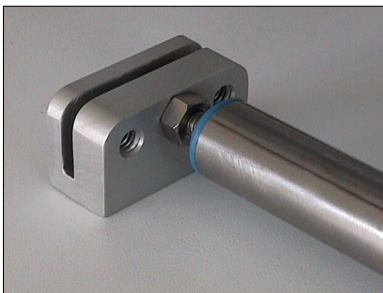
Angle Bracket
Part #21002



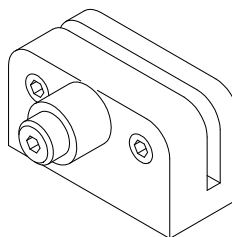
8mm
Nuts, Bolts
and Washers



Square Nuts
8mm and #8-32



Belt Return
Bracket Part #21082
Bearing or Roller



Belts Less Than 12"



T-Bolts

Sizes:

8mm x 17mm
8mm x 24mm
8mm x 35mm
8mm x 53mm

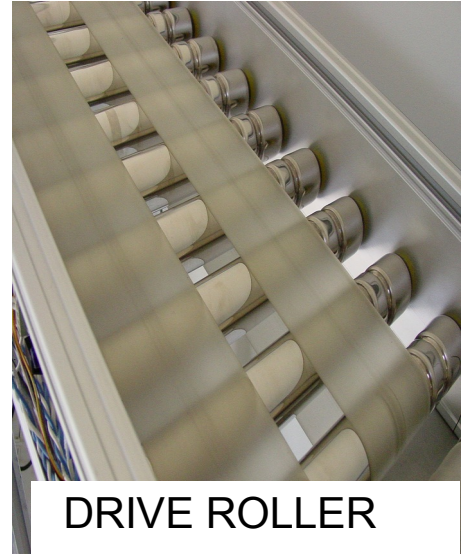
Special Belts



PART PROFILES



CLEATED INDEXING



DRIVE ROLLER



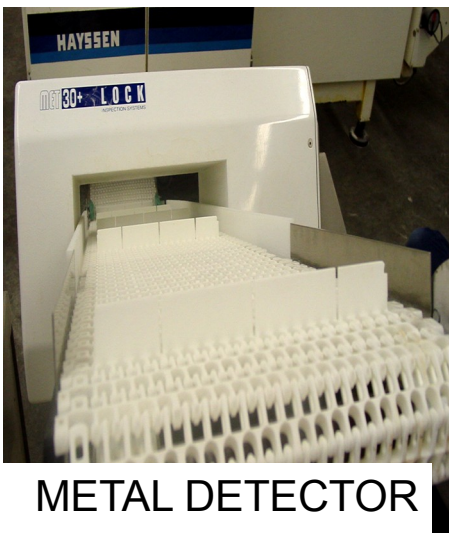
TIMING BELTS



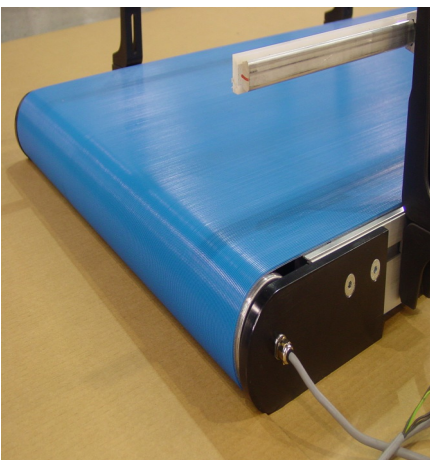
WIRE MESH BELTS



PLASTIC BELTS



METAL DETECTOR

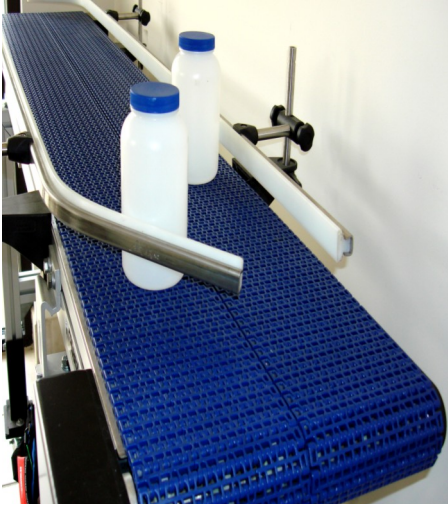


DRIVE ROLLER

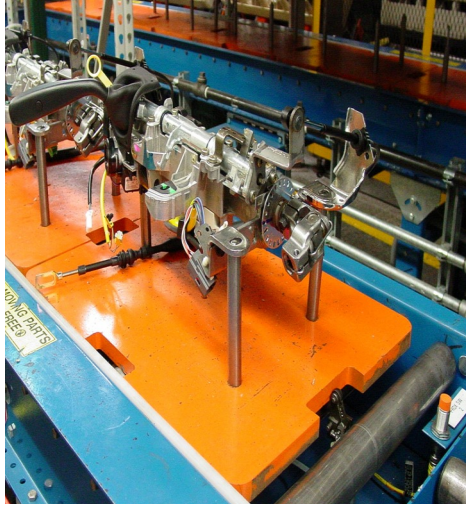


INTERNAL SLAVE

Custom Conveyors



BI DIRECTIONAL



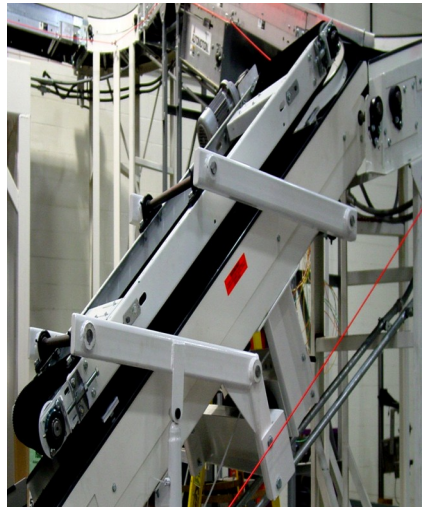
CUSTOM PALLETS



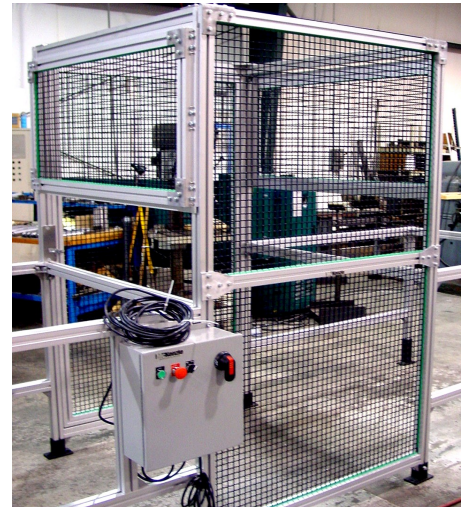
ROBOT CONVEYORS



PALLET CONVEYORS



BAG FLATTENER



WIRE CAGES



DUAL BELTS



PLASTIC CHAIN



DUAL BELTS